

**astro**<sup>TM</sup>



**Astro**<sup>TM</sup> Snap Lock System

# Astro™ Snap Lock System

An architectural roof style at an affordable price.

The very sophisticated Astro™ Snap Lock System opens a new dimension in metal roofing. Astro™ allows a quick and straightforward installation direct onto existing purlins or battens. The roof trays and specially engineered accessories are pre-manufactured according to your specification and delivered to your building site.

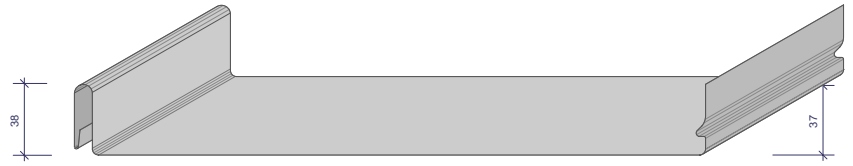
Astro™ provides permanent metal roofing solutions with excellent performance in regards to waterproofing, wind uplift and walkability. Together with an insulation blanket, the noise level is equal to asphalt, wood or terracotta.

## Architecture

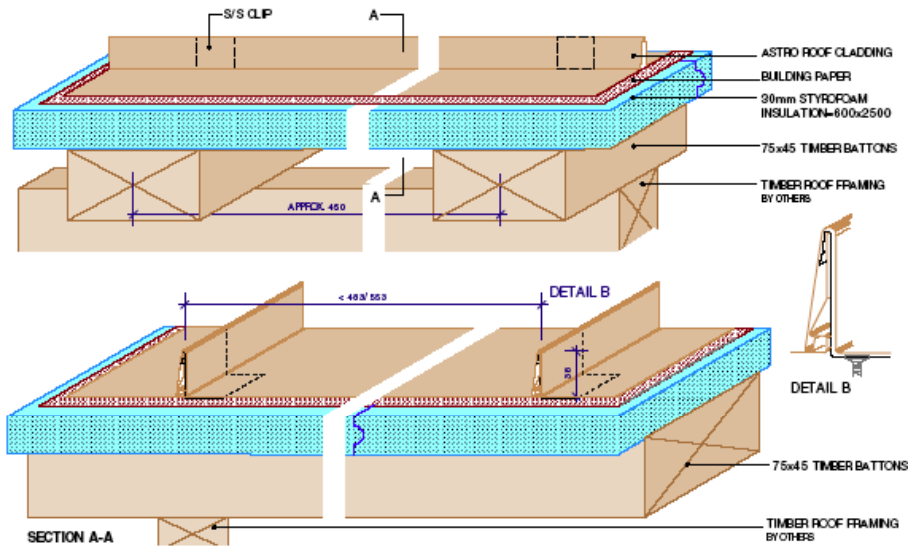
- Traditional double standing seam appearance
- Flat roofs, pitched roofs
- Straight or tapered roof sheets
- Concealed fasteners

## Performance

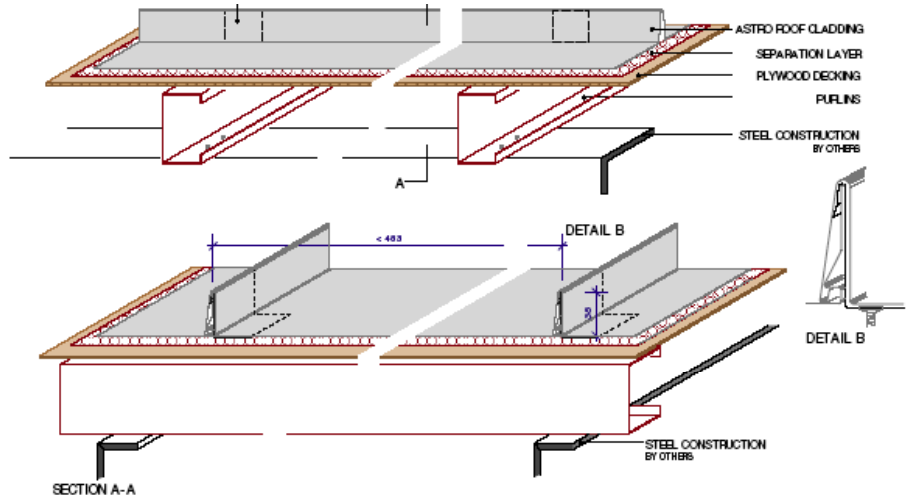
- Long lasting, suitable for harsh environment and maritime climate
- Concealed fixing, no drilling holes through the roof trays
- Constraint free thermal expansion
- Any tray length possible: no cross welds necessary
- Astro™ interlocking seam allows a quick and easy installation
- No special tools required
- Light weight
- Virtually maintenance free



Profile Astro™ 38mm  
(variable width)



Typical Detail Astro™ roof structure on hardboard insulation substructure



Typical Detail Astro™ roof structure on plywood substructure

## Technical Specifications

Seam height	38mm
Tray width Copper	variable, up to 553 mm
Tray width Aluminium	variable, up to 483 mm
Tray width Stainless Steel	variable, up to 483 mm
Roof pitch	> 1,5° (2.6%)



### Rollforming specifications

#### Material gauges

Non-ferrous metals	0.6 – 0.8 mm
Stainless steel	0.4 – 0.5 mm
Coated steel	0.5 – 0.7 mm

#### Coil width

From 300 mm to 800 mm



### A state-of-the-art, non-ferrous roof system

Similar to traditional mechanic standing seam roofs, Astro™ provides a distinctive 38 mm high, thin structural standing seam. The very sophisticated Astro™ Snap Lock System allows a quick and straightforward installation. The aesthetically pleasing design covers the full range of buildings from residential properties to commercial constructions.

### Perfectly roll-formed roof trays

Each Astro™ tray is cut to the desired length and roll-formed by machine to ensure the highest precision. Our qualified craftspeople guarantee the upmost quality and work to the exact specification you provide.



### Astro™ Roof Details

#### Ridge

- Ridge capping
- Underflashing
- Sealant tape
- Fixing to top hat or plywood substructure

#### Eave seam termination with gutter

- Starter Strip Girth 330 mm
- Gutter 150 mm
- Stainless steel clips fixed to top hat or plywood substructure



## Material Finish

### Falzonal Aluminium

Falzonal prepainted aluminium in Lock-Welt-Quality is a material specially developed for roof cladding

A wide range of colours allows individualised design options in numerous colour tones. The high plasticity and workability mean that Falzonal is ideal for all types of architecture. Processing the material is both easy and cost effective.

### Stainless Steel

Grade 445M2 is a ferritic stainless steel specially formulated to give excellent corrosion resistance to the atmosphere, particularly marine atmospheres. It will give corrosion performance superior to the austenitic grade 316. The low reflective surface finish (2DR) is produced by skin pass rolling the strip with shot blasted rolls. The resulting surface is a uniform matt grey.

### Copper

#### Classic

Copper sheets and strips produced in their classic, bright rolled form. The surface will slowly develop the patina typical of copper when exposed to the atmosphere

#### Oxide (brown)

Copper sheets and strips are pre-oxidised on both sides, which allows the bright copper phase to be bridged so that a uniform, dark brown oxidised layer is achieved. The surface further develops into the natural oxide layer in the course of weathering.

#### Patina (green)

The green patina present on one side of the copper sheets and strips is industrially produced using a specially developed process in which the copper is mechanically and chemically treated. When exposed to further weathering, the patina continues to develop.

### Titanium Zinc

Rheinzink® millfinish or pre weathered. Call us for a data sheet.

## Technical Data Aluminium

<b>Dimensions</b>	Gauge	0.7 mm
	Width	600 mm
<b>Strength</b>	Tensile Strength	Rm 130 - 170 N/mm <sup>2</sup>
	Proof stress	Rp 0.2 >100 N/mm <sup>2</sup>
	Elongation	A50 >6%
<b>Thermal Expansion</b>	Coefficient of linear expansion	2.4 mm/m
<b>Coating</b>	Front face	2 layer system (primer and top coat applied using coil-coating process Paint System: PVDF (polyvinylidene fluoride))
	Reverse face	transparent protective lacquer

## Technical Data 445M2 Stainless Steel

<b>Dimensions</b>	Gauge	0.4 mm
	Width	600 mm
<b>Strength</b>	Tensile Strength	535 MPa
	Yield stress	385 Mpa (0.2% Proof Stress)
	Elongation	27%
<b>Thermal Expansion</b>	Coefficient of linear expansion	10.0 x 10 <sup>-6</sup>

## Technical Data Copper

<b>Dimensions</b>	Gauge	0.5 – 1.0 mm
	Width	600 mm – 800 mm
<b>Strength</b>	Tensile Strength	Rm 255-285 N/mm <sup>2</sup>
	Proof stress	Rp 0.2 >180-235 N/mm <sup>2</sup>
	Elongation	A50 >8%
<b>Thermal Expansion</b>	Coefficient of linear expansion	1.7 mm/m



**astro**<sup>TM</sup>

**Craft Metals Pty Ltd** Supplies and Products  
Unit 6, 39 King Road Hornsby NSW 2077  
T 02 9476 0832 F 02 9476 0835  
info@roofs.com.au www.roofs.com.au